



# STREET SIGNS



# FUSIONS



by AGF

FREE PATTERN





# STREET SIGNS

QUILT DESIGNED BY *AGFstudio*



## ART DISTRICT FUSION

FABRICS DESIGNED BY AGF STUDIO



FUS-AD-1602  
ROSES & LETTERS DISTRICT



FUS-AD-1600  
CAT NAP DISTRICT



FUS-AD-1606  
CITY SOUNDS DISTRICT



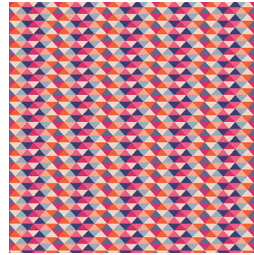
FUS-AD-1604  
ASPHODEL DISTRICT



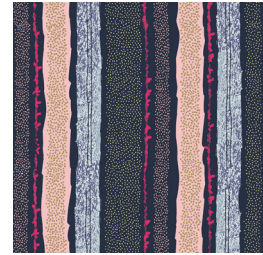
FUS-AD-1609  
I SCREAM, YOU SCREAM DISTRICT



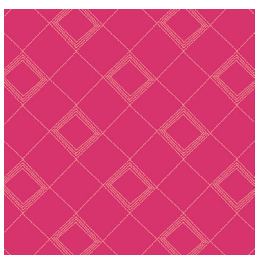
FUS-AD-1601  
WAVES OF ECHOES DISTRICT



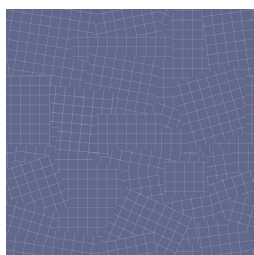
FUS-AD-1607  
TRIPIXELS DISTRICT



FUS-AD-1605  
STRAWS OF DISTRICT



FUS-AD-1603  
TARTAN DISTRICT



FUS-AD-1608  
PHONOGRAPHIC GRIDS DISTRICT



# STREET SIGNS

FINISHED SIZE | 55" x 66"

## FABRIC REQUIREMENTS

Fabric <b>A</b>	FUS-AD-1601	¾yd.
Fabric <b>B</b>	FUS-AD-1603	¾yd.
Fabric <b>C</b>	FUS-AD-1604	¾ yd.
Fabric <b>D</b>	FUS-AD-1605	1 yd.
Fabric <b>E</b>	FUS-AD-1606	1 yd.
Fabric <b>F</b>	FUS-AD-1607	¾yd.
Fabric <b>G</b>	FUS-AD-1608	1 yd.
Fabric <b>H</b>	PE-473	¾yd.
Fabric <b>I</b>	PE-404	¾yd
Fabric <b>J</b>	PE-428	¾yd

### BACKING FABRIC

FUS-AD-1609 3¼ yds.

### BINDING FABRIC

Fabric **G** FUS-AD-1608 (Included)

## CUTTING DIRECTIONS

*¼" seam allowances are included.  
WOF means width of fabric.*

Ten (10) 2 ½" x WOF fabrics **A** and **H**

Fifteen (15) 1 ½" x WOF Fabrics **B**, **F** and **I**

Seventeen (17) 1 ½" x WOF Fabric **C**, **G** and **J**

Fourteen (14) 2 ½" x WOF Fabrics **D** and **E**

## CONSTRUCTION

*Sew all rights sides together with ¼" seam allowance.*

- Take one 1 ½" x WOF strip from each of the fabrics **B**, **F** & **I**
- Attach them in the order **FIB**
- Repeat the same steps for the remaining 1 ½" x WOF strips from **B**, **F** & **I** fabrics.



DIAGRAM 1

- Take all the **FIB** strips and sub-cut into 8" until you get a total of seventy (70) **FIB** 8" sets.
- Take fourteen (14) sets and attach them together vertically.
- Repeat the same previous steps in order to complete five of this pieces.
- Set aside.



DIAGRAM 2

- Take two 2 ½" x WOF strip from each of the fabrics **A** & **H**
- Attach them in the order **AHAH**
- Repeat the **AHAH** set until you have a total of five (5).



DIAGRAM 3

- Take one **FIB** set & one **AHAH** set.
- Attach the **AHAH** on top of the **FIB** set.
- Repeat the previous steps with the remaining pieces to get a total of five (5).
- Take the template and cut a total of Fifteen (15) hexagons as shown in the diagram below.
- You would be able to cut three (3) hexagons from each piece.
- Set aside

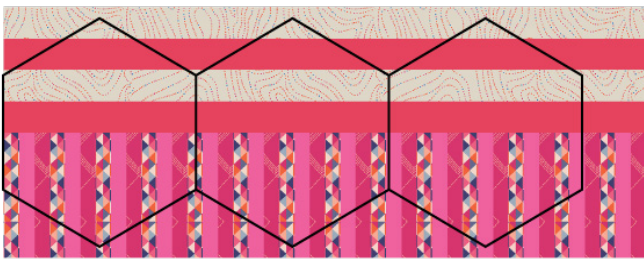


DIAGRAM 4

- Take one 1 1/2" x WOF strip from each of the fabrics **C, G & J**
- Attach them in the order **CJG**
- Repeat the same steps for the remaining 1 1/2" x WOF strips from **C, G & J** fabrics.



DIAGRAM 5

- Take all the **CJG** strips and sub-cut into 8" until you get a total of Eighty four (84) **CJG** 8" sets.
- Take fourteen (14) sets and attach them together vertically.
- Repeat the same previous steps in order to complete six of this pieces.
- Set aside.



DIAGRAM 6

- Take two 2 1/2" x WOF strip from each of the fabrics **D & E**
- Attach them in the order **DEDE**
- Repeat the **DEDE** set until you have a total of six (6)



DIAGRAM 7

- XX
- Take one **CJG** set & one **DEDE** set.
  - Attach the **DEDE** on top of the **CJG** set.
  - Repeat the previous steps with the remaining pieces to get a total of six (6).
  - Take the template and cut a total of Eighteen (18) hexagons as shown in the diagram below.
  - You would be able to cut three (3) hexagons from each piece.
  - Set aside

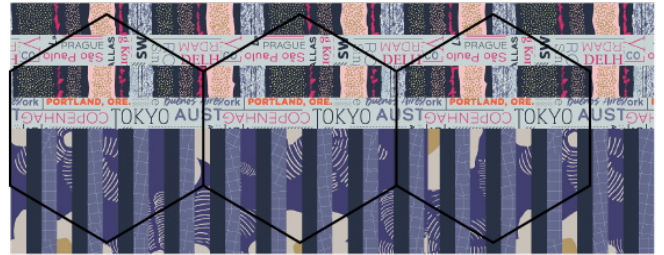


DIAGRAM 9

## ASSEMBLING THE TOP

- Start attaching the hexagon strips alternating the order as shown in diagram below.
- When the top is ready trim it to 55" x 66"



## QUILT ASSEMBLY

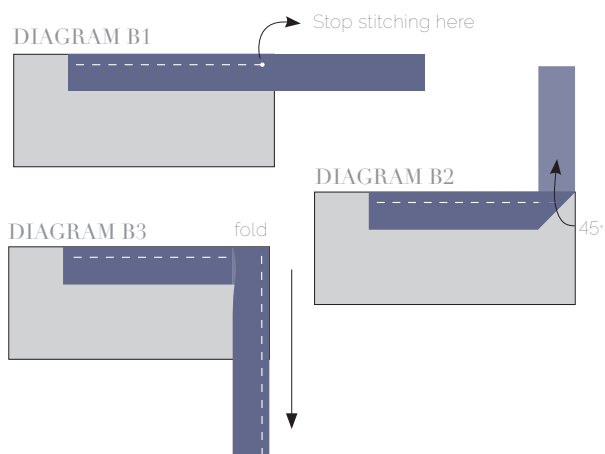
*Sew rights sides together.*

- Place BACKING FABRIC on a large surface wrong side up. Stretch it with masking tape against that surface.
- Place BATTING on top of backing fabric.
- Place TOP on top of the batting with right side facing up. Smooth away wrinkles using your hands.
- Pin all layers together and baste with basting thread, using long stitches. You can also use safety pins to join the layers.
- Machine or hand quilt starting at the center and working towards the corners. Remember that quilting motifs are a matter of personal preference. Have fun choosing yours!
- After you finished, trim excess of any fabric or batting, squaring the quilt to proceed to bind it.

## BINDING

*Sew rights sides together.*

- Cut enough strips  $1\frac{1}{2}$ " wide by the width of the fabric **G** to make a final strip 252" long. Start sewing the binding strip in the middle of one of the sides of the quilt, placing the strip right side down and leaving an approximated 5" tail. Sew with  $\frac{1}{4}$ " seam allowance (using straight stitch), aligning the strip's raw edge with the quilt top's raw edge.
- Stop stitching  $\frac{1}{4}$ " before the edge of the quilt (DIAGRAM B 1). Clip the threads. Remove the quilt from under the machine presser foot. Fold the strip in a motion of  $45^\circ$  and upward, pressing with your fingers (DIAGRAM B2). Hold this fold with your finger, bring the strip down in line with the next edge, making a horizontal fold that aligns with the top edge of the quilt (DIAGRAM B3). Start sewing at  $\frac{1}{4}$ " of the border, stitching all the layers. Do the same in the four corners of the quilt.
- Stop stitching before you reach the last 5 or 6 inches. Cut the threads and remove the quilt from under the machine presser foot. Lay the loose ends of the binding flat along the quilt edge, folding the ends back on themselves where they meet. Press them together to form a crease. Using this crease as the stitching line, sew the two open ends of the binding with right sides together (you can help yourself marking with a pencil if the crease is difficult to see).
- Trim seam to  $\frac{1}{4}$ " and press open. Complete the sewing. Turn binding to back of the quilt, turn raw edge inside and stitch by hand using blind stitch.

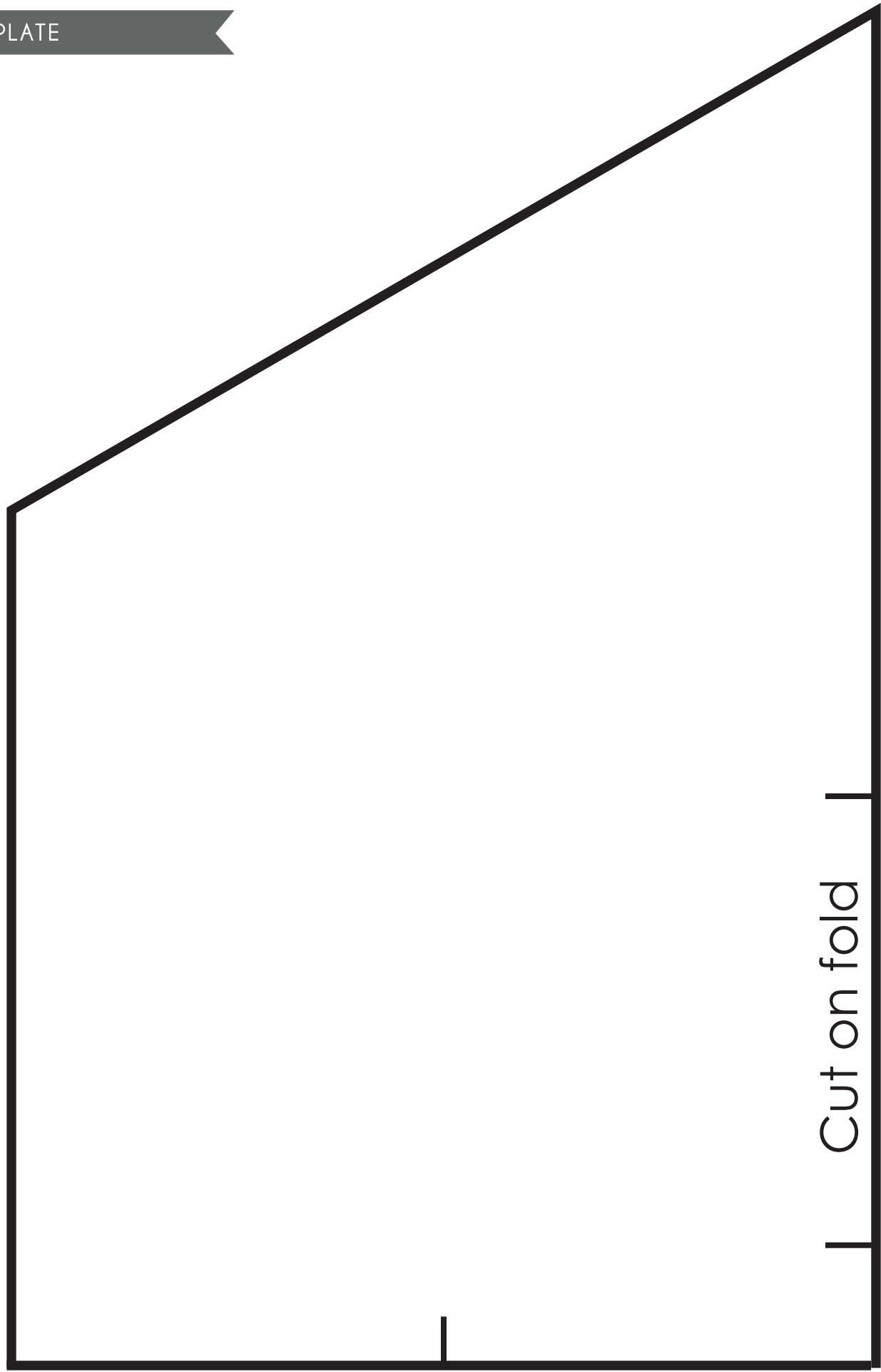


[artgalleryfabrics.com](http://artgalleryfabrics.com)

*NOTE: While all possible care has been taken to ensure the accuracy of this pattern, We are not responsible for printing errors or the way in which individual work varies. Please read instructions carefully before starting the construction of this quilt. If desired, wash and iron your fabrics before starting to cut.*

© 2018 Courtesy of Art Gallery Quilts LLC. All Rights Reserved.

TEMPLATE



TEMPLATE

